

HOUSE SPECIFICATIONS

Effectivity Date:03/09/2017

Abigail Combined

Floor Area= 156.71sq. m

Lot Area=176.00 sq. m

ROOFING SYSTEM

Gauge 26 pre-painted Rib-type long span G.I. sheets, complete with bended accessories on steel roof framing system;with insulation

CEILING FINISHES

Fiber cement board painted finish for Ground Floor and Second Floor ceiling

WINDOWS

Powder coated aluminum framed sliding windows.

DOORS

Panel door painted finish for main and service door.

Flush-type door painted finish for Bedrooms

PVC door with jamb for toilet & bath

RAILINGS

Wood stair handrail with steel railings paint finish.

KITCHEN FIXTURES

Stainless steel sink with faucet.

Glazed tiles for countertop and splashboard with utility cabinet under the sink

TOILET AND BATH

Flush-type toilet bowl with lavatory

Glazed tiles for the walls

Unglazed tiles for floors

FLOOR FINISH

Ground Floor: Ceramic tiles

Second Floor: Ceramic tiles

Carport: Pebble washout with tile accent

CONCRETE WALLS FINISH

Interior: Painted finish

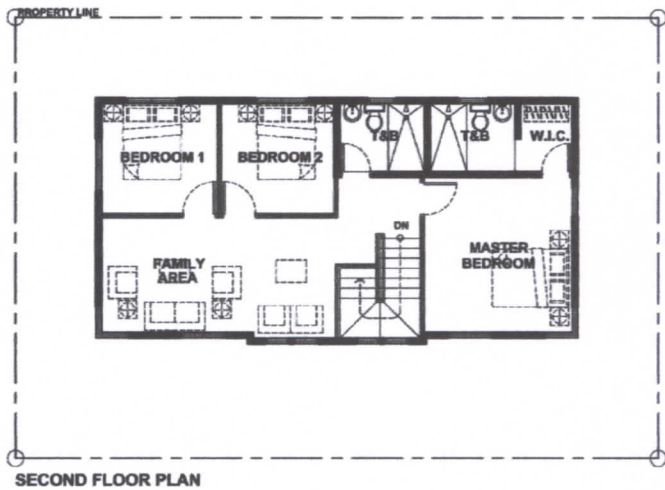
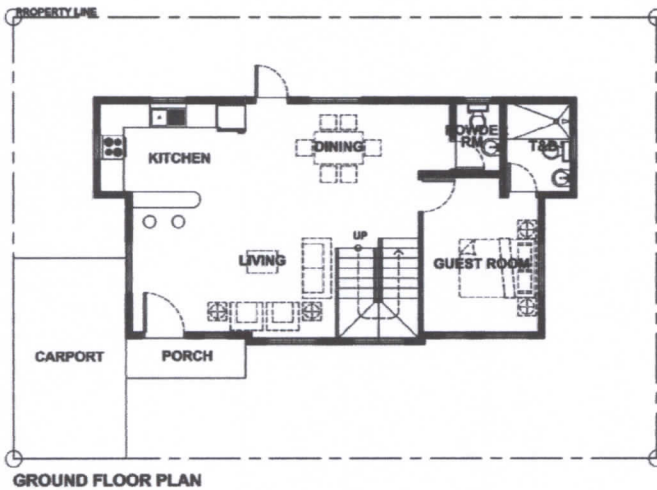
Exterior: Textured cement paint finish

STAIRS

Reinforced Concrete Stairs with wooden planks steps

SECOND FLOOR

With second floor partition, fiber cement board on both side of a light steel wall framing.



- Home Improvements & special requests can be availed provided that buyers will be charged a fee equivalent to the one indicated on the House Modifications. Please coordinate your request on the point of reservation.
- Furnishings and closets are not included in the deliverable of the unit.

Conforme:

Buyer's signature over Printed Name and Date

Authorized Signature:

 DBJ / JHC (March 2017)